

Disassembly of 6" gun with cone bullbarrel

1. Please make sure that the gun is completely unloaded! Always wear eye protection because gun contains spring loaded parts.



2. Always point muzzle away from face to prevent injury.

3. Pull slide backwards until halfmoon notch lines with top rear of slide stop.



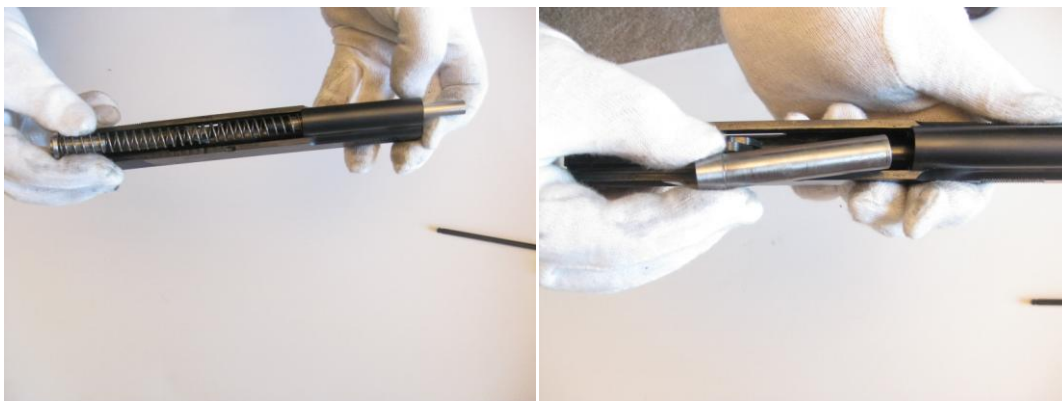
4. Press slide stop shaft on right side of frame and remove slide stop by pulling it out left side of frame. Then you can pull slide forwards from frame.



5. Put allen wrench into front of guide rod and open center-clockwise while fixing the end of the guide rod with other hand. **Please note that plug is under heavy tension from recoil spring.**



5. You can now carefully remove the front end of guide rod through front of slide and rear end with spring and plug through rear end of slide.



6. Tilt barrel link forwards and remove barrel through front of slide.



7. Assembly is done by basically reversing order of disassembly. Install plug properly that front of plug lines with front side of slide.

Do not shoot the gun if this is not done!

8 Before you install the slide stop make sure that the link is in one line with drills in frame.

